

COMPANY OVERVIEW

WMS is a specialist engineering consultancy firm providing high-quality solutions to hydraulic design, water resources and floodplain management problems, with offices in Brisbane, Sydney, Melbourne and Cairns.

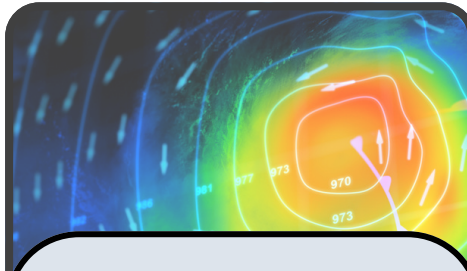
WITH US YOU CAN CONSIDER IT DONE

WMS has serviced local government clients since its inception in 2012. We partner with Councils to fully understand the issues being faced and bring about safe, sustainable solutions that meet the needs of both Council and the community. We understand that flooding and drainage issues do not exist in isolation, and our team is able to span various council departments to ensure civil solutions meet a range of required outcomes.



DRAINAGE MANAGEMENT

- 1D and 2D flood modelling and mapping.
- Prioritisation of capital works.
- Flood impact assessments.



FLOOD FORECASTING

- Development of flood forecasting models.
- Integration with flood forecasting platforms.



CAPITAL WORKS

- Review of flood impacts.
- Drainage network analysis and culvert sizing.
- Scour protection

WAVERLEY COUNCIL

WMS was engaged by Waverley Council to assist with a high volume of Development Applications and Construction Certificate drawings that required stormwater assessment. This secondment included reviewing stormwater plans for Development, the Application and Construction Certification.

“WMS have provided exceptional performance and service to our team. They have delivered consistent high quality work, process improvement for our internal team, filled gaps in our internal assessment process and been incredibly collaborative and easy to work with. Their attention to detail, time management and suitability of project personnel has been faultless. I would highly recommend WMS for Engineering and Civil Engineering Services based on our experiences with them over the past 12 months.”

ROBBIE FRAWLEY - Waverley Council

CONTACT US

BRISBANE

Blake Boulton

☎ +61 413 790 406

📍 Fortitude Valley QLD 4006

✉ blake.boulton@wmseng.com.au

SYDNEY

Catherine Walker

☎ +61 419 975 521

📍 Marrickville NSW 2204

✉ catherine.walker@wmseng.com.au

MELBOURNE

Jacqueline Woodlock

☎ +61 438 780 049

📍 Docklands VIC 3008

✉ jacqueline.woodlock@wmseng.com.au

NORTH QUEENSLAND

Iain Brown

☎ +61 408 014 631

📍 Cairns QLD 4870

✉ iain.brown@wmseng.com.au

CAIRNS REGIONAL COUNCIL

WMS's own Iain Brown spent the last six years with Cairns Regional Council, five of which were in the Drainage Coordinator position. He is also completing a 12 week secondment with Cairns Regional Council in the same position, completing the tasks currently outlined in the RFQ.

Iain's role in this secondment included: Assisting with Flood Warning Network System Upgrades, assisting in the development of the EOI for the flood warning network system upgrade, and conducting Flood Searches as requested. Iain project managed the underlying studies used to develop the data for the flood search process, assisted with current and future opex/capital project scope development and project management. Iain developed the capital and operational works programs for the Drainage team for Cairns Regional Council, and has helped deliver the overall capital works program for Cairns Regional Council, Analyse and provide technical recommendations for any Stormwater and Waterways queries.

Iain was involved in coastal management, including delivery of coastal protection works at Holloways Beach, sand nourishment and coastal studies, undertook and reviewed flood searches, and development application review.



Iain Brown
Principal Engineer
WMS Engineering

Reconnecting Holloways Beach

Tropical Cyclone Jasper crossed the Queensland coast north of Cairns on 13th of December as a category 2 system. Widespread flooding occurred shortly after resulting in flooded homes and business, loss of crops and livestock, power outages and isolation and damage to infrastructure. Located ten minutes north of Cairns, homes in the suburb of Holloways Beach were cut off when a 125 m section of Casuarina Street was overtopped and washed away. WMS mobilised over the Christmas/New Year break to develop a 2-dimensional flood model and evaluate three potential upgrade options for the washed-out section of Casuarina Street. The options were to leave the washed-out section open by constructing a new bridge, installing high level culverts or constructing a new causeway. The modelling showed significant potential future benefit from construction of a new bridge and the results may be used to apply for funding for further detailed engineering investigation and design.



Albury City Council

WMS was commissioned by Albury City Council to conduct a flood study in the vicinity of the NEXUS Industrial Precinct to better understand the current flood risk at the site and further explore the potential of constructing a flood levee on the western boundary of the precinct to protect future development.

Balonne Shire Council

WMS was commissioned by Balonne Shire Council to conduct the Balonne Shire Flood Hydraulic Modelling and Mapping Review to better define the flood risk within St George, Dirranbandi, Thallon, Mungindi, Hebel, Bollon and Nindigully and surrounding areas.

Bathurst Regional Council

WMS was commissioned by Bathurst Regional Council to assist with the preparation of a Technical Specification and associated tender documents for the Bathurst Flood Study Update.

Campaspe Shire Council

WMS was commissioned by Campaspe Shire Council to carry out a detailed flood study and management plan of Kyabram and its immediate surround including the influence of the Mosquito Depression to the south.

Byron Shire Council

WMS was commissioned by Byron Shire Council to undertake a study to identify a suitable site for an Emergency Hub and to create the content, design and delivery of interactive Flood Story Signage.

Central Goldfields Shire Council

WMS was engaged by Central Goldfields Shire Council to carry out a detailed flood study for the township of Maryborough. This project involved hydrological and hydraulic modelling of the study area in order to produce flood mapping and a comprehensive set of intelligence outputs for the full range of design events.

Clare & Gilbert Valleys Council

WMS was commissioned by Clare & Gilbert Valleys Council to provide a flood impact assessment for a proposed development in Kilsyth.

Gladstone Regional Council

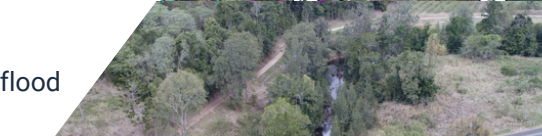
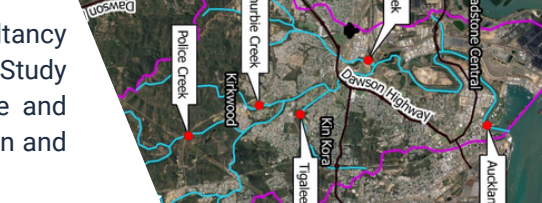
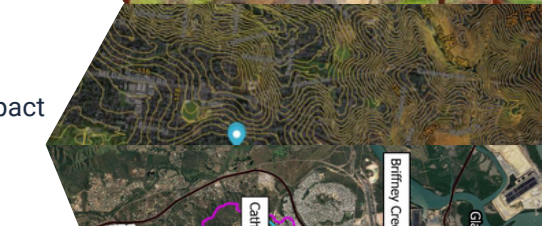
WMS was commissioned by Gladstone Regional Council to the provision of consultancy services to undertake the Boyne River Flood Study and provide an updated Flood Study report in order to modify the Flood Hazard Overlay in the Planning Scheme and provide technical advice on flooding to external parties and inform other GRC design and planning projects.

Gympie Regional Council

WMS was commissioned by Gympie Regional Council to carry out comprehensive flood studies for the Amamoor Creek, Kandanga Creek and Yabba Creek Catchments.

Maribyrnong City Council

WMS was commissioned by Maribyrnong City Council for the Provision of a Flood Mitigation Investigation two streets in Yarraville.



Latrobe City Council

WMS was commissioned by Latrobe City Council to undertake a flood mitigation study in Glengarry to construct and maintain stormwater management assets and support planning, policy and regulation to achieve the best stormwater outcome for the community.

Manawatu District Council

WMS was commissioned by Manawatu District Council to undertake the predesign and provide advice for stormwater management within four identified local growth areas within the township of Feilding.

Melton City Council

WMS was commissioned by Melton City Council provide a drainage strategy for the proposed upgrade of Middle Road between Christies Road and Hopkins Road.

Narrabri Shire Council

WMS was commissioned by Narrabri Shire Council to carry out a detailed feasibility study of two detention basins which work in combination to reduce overland flood risk in Narrandera.

Indigo Shire Council

WMS was commissioned by Indigo Shire Council to carry out an updated flood study and assessment of the township of Chiltern in order to produce updated flood mapping and intelligence outputs for the full range of design events.

Inner West Council

WMS was commissioned by Inner West Council to provide a flood impact assessment for the proposed development in North Ashfield

Kiama Municipal Council

WMS was commissioned by Kiama Municipal Council to undertake a Flood Assessment for the Werri Beach Holiday Park in Gerringong to deliver expertise in floodplain risk management and modelling, and flood mitigation and drainage design.

Kingston City Council

WMS was commissioned by Kingston City Council to provide a flood impact assessment for a proposed development at the Snowdon Reserve Dog Park.

Rous County Council

WMS was commissioned by Rous County Council to deliver terrain and bathymetry data collection for Emigrant Creek Dam and Rocky Creek Dam.

Rural City of Wangaratta

WMS was commissioned by Rural City of Wangaratta to assist with The Wangaratta South Growth Area Development Contributions Plan to ensure the basin volume and area is adequately sized to detain the post-developed flows to pre-developed levels.

Shoalhaven City Council

WMS was commissioned by Shoalhaven City Council to carry out comprehensive flood studies for the Millards Creek and Currarong Creek Catchments.



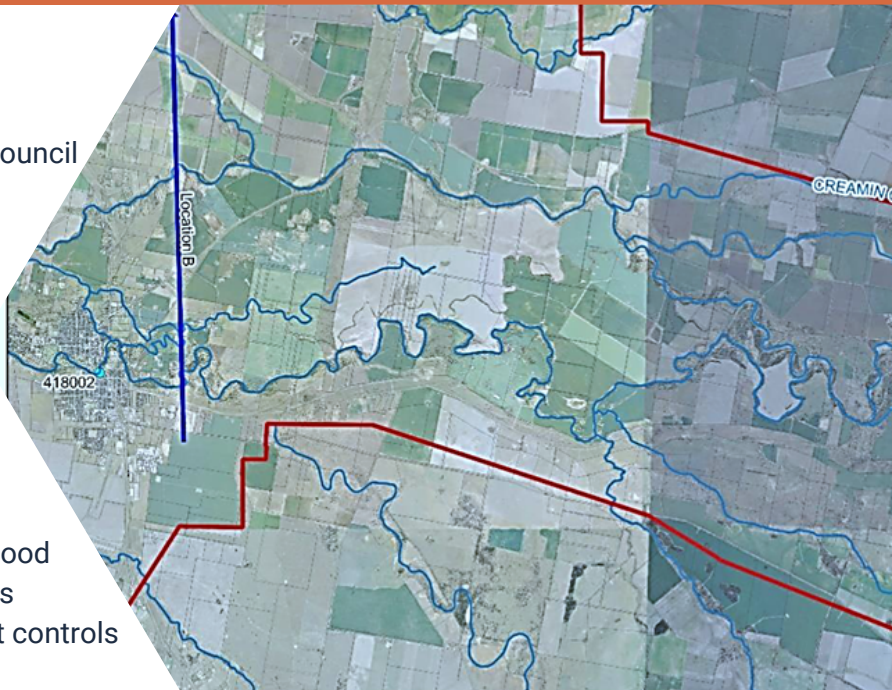
Moree Plains Shire Council

WMS was commissioned by Moree Plains Shire Council for the Pallamallawa Northern Levee Second Design Review to improve flood resilience in Pallamallawa.

Additionally MPSC commissioned WMS to undertake a flood model update for the township of Moree in 2022.

In 2023 WMS provided a review of the Moree Voluntary House Raising Policy.

In that same year WMS also completed a detailed investigation of Flood Planning Area (FPA) and Flood Planning Level (FPL) definition in Moree, as well as reviewing and updating flood related development controls to suit Moree's current needs.



Swan Hill Rural City Council

WMS was commissioned by Swan Hill Rural City Council to produce the Swan Hill Drainage Strategy and Software Model to accurately determine and identify issues/constraints, assess peak storm durations for the existing council drainage system and all retarding basins, and determine a forward works program to future-proof both towns.

Tenterfield Shire Council

WMS was commissioned by Tenterfield Shire Council to undertake an updated bathymetric survey for Tooloom Creek.

Toowoomba Regional Council

WMS was commissioned by Toowoomba Regional Council to deliver a Computational Fluid Dynamics (CFD) assessment for the Pittsworth Water Reclamation Facility.

